

Service Updates

Shank Point Conversion Kits Model Years 1988 - 1990

Section 5

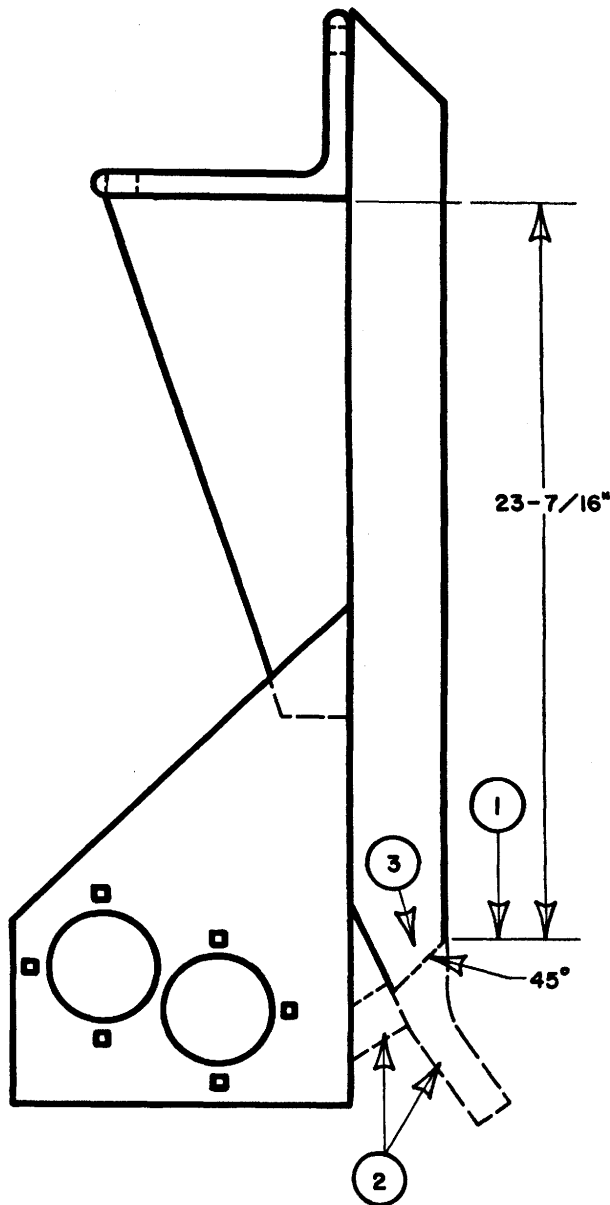
Shank Point Conversion Kit – Shear Point..... 2-3

Shank Point Conversion Kit – Rock Point..... 4-5

Return to this page by clicking the upper right corner of any page in this section.

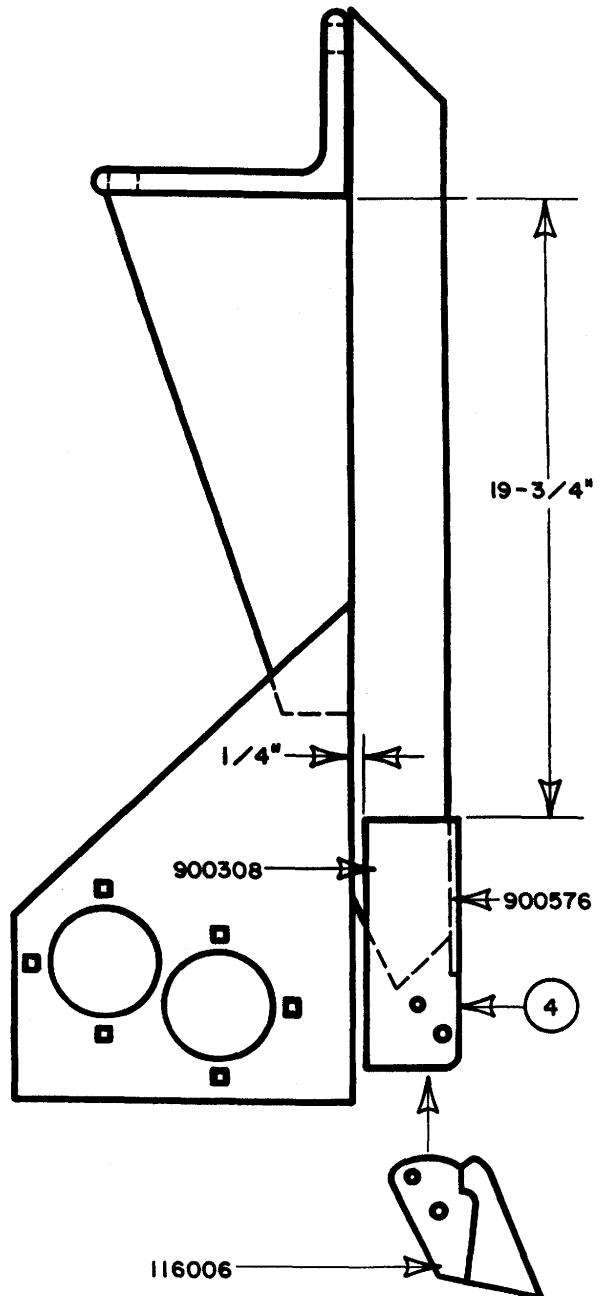
900605 SHANK POINT CONVERSION KIT (SHEAR POINT)

STEP 1-3



1. MEASURE DOWN FROM THE BOTTOM OF THE SHANK ANGLE $23-7/16"$, AS SHOWN, ON THE FRONT EDGE OF THE SHANK BAR.
2. SCRIBE A LINE AT A 45° ANGLE DOWN FROM THE PREVIOUS $23-7/16"$ MEASUREMENT AND CUT OFF, AS SHOWN. REMOVE THE SHANK BAR GUSSET AT THIS TIME ALSO.
3. GRIND EXCESS BULGE OFF THE REMAINING SHANK BAR. GRIND THE REMAINING PORTION OF THE BULGE DOWN TO A $1"$ THICKNESS TO MATCH THE UPPER PORTION OF THE $1"$ SHANK BAR.

STEP 4



4. TACK NEW PLATES (NO. 900308 & 900576) IN PLACE AT THE GIVEN DIMENSIONS, HEAT THE SHANK BAR 4 MINUTES, THEN WELD THE NEW PLATES TO THE SHANK BAR USING A 7018 ROD.

SHANK POINT CONVERSION KIT—SHEAR POINT (900605)**Parts List**

<u>Item No.</u>	<u>Part No.</u>	<u>Qty</u>	<u>Description</u>
1.	900308	2	Shank Point Plate
2.	900576	1	Cover Plate
3.	116006	1	Shear Point
4.	900605	1	Conversion Kit Instructions

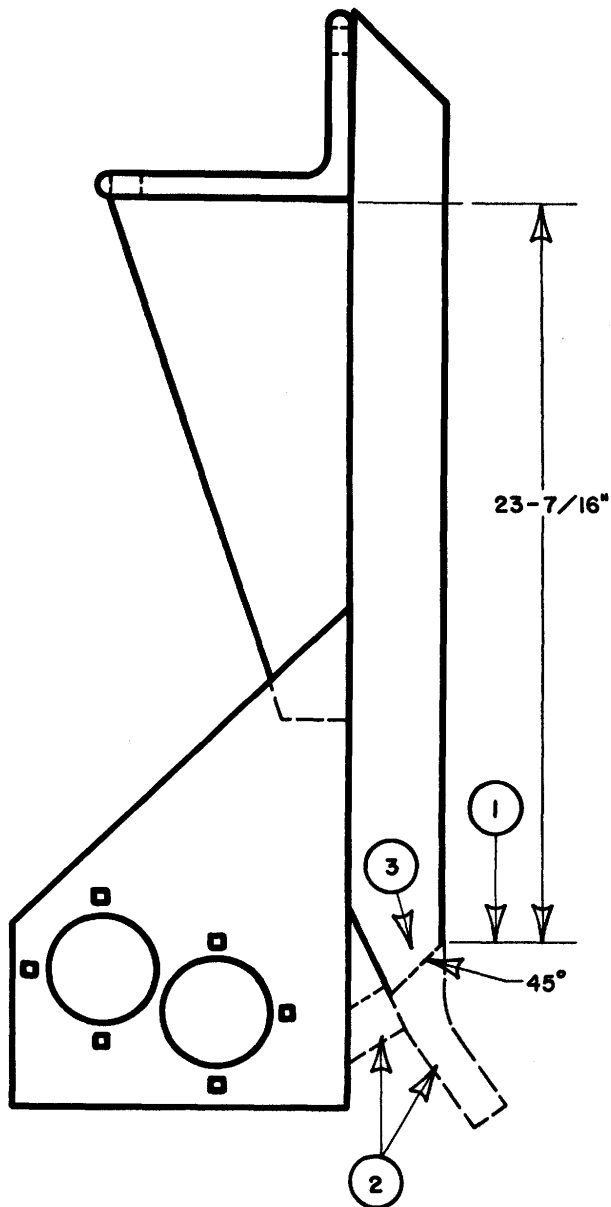
Hardware List

<u>Item No.</u>	<u>Part No.</u>	<u>Qty</u>	<u>Description</u>
A.		1	$\frac{3}{8}$ " \times $2\frac{1}{4}$ " NC Hex Bolt, Grade 5—Top Hole
B.		1	$\frac{3}{8}$ " NC Whiz Nut—Top Hole
C.		1	$\frac{1}{2}$ " \times 2" Roll Pin—Bottom Hole

NOTE: This shear point conversion kit contains the conversion parts for only one shank. Be sure when ordering to specify the number of shanks being converted.

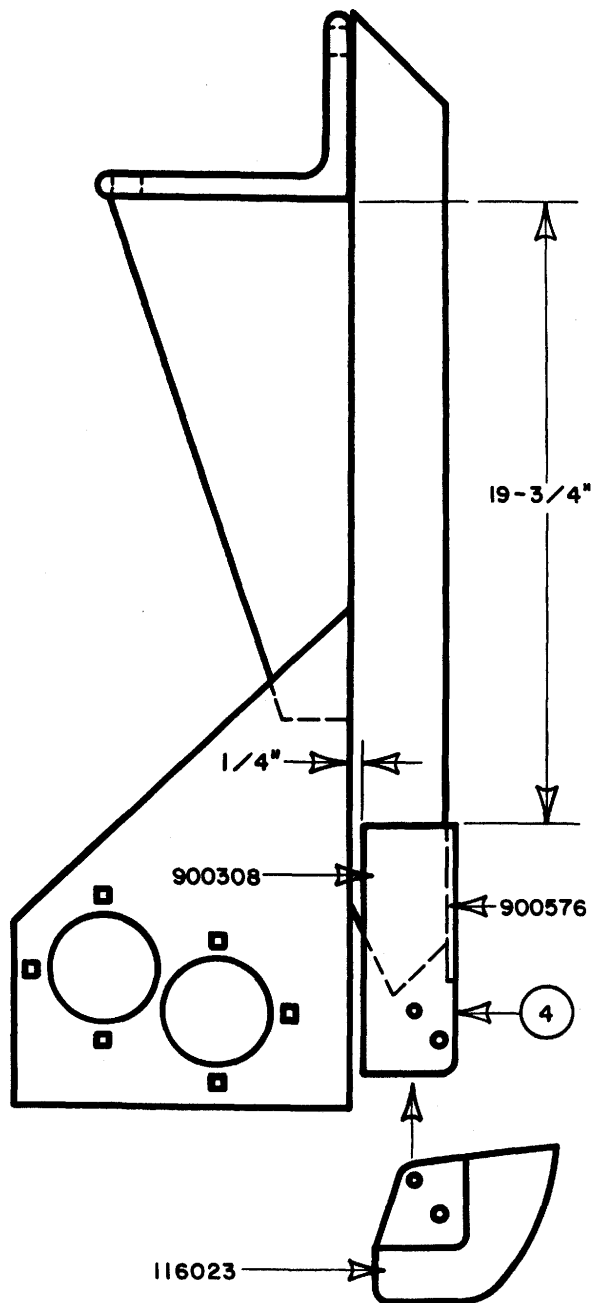
900606 SHANK POINT CONVERSION KIT (ROCK POINT)

STEP 1-3



1. MEASURE DOWN FROM THE BOTTOM OF THE SHANK ANGLE $23-7/16"$, AS SHOWN, ON THE FRONT EDGE OF THE SHANK BAR.
2. SCRIBE A LINE AT A 45° ANGLE DOWN FROM THE PREVIOUS $23-7/16"$ MEASUREMENT AND CUT OFF, AS SHOWN. REMOVE THE SHANK BAR GUSSET AT THIS TIME ALSO.
3. GRIND EXCESS BULGE OFF THE REMAINING SHANK BAR. GRIND THE REMAINING PORTION OF THE BULGE DOWN TO A $1"$ THICKNESS TO MATCH THE UPPER PORTION OF THE $1"$ SHANK BAR.

STEP 4



4. TACK NEW PLATES (NO. 900308 & 900576) IN PLACE AT THE GIVEN DIMENSIONS, HEAT THE SHANK BAR 4 MINUTES, THEN WELD THE NEW PLATES TO THE SHANK BAR USING A 7018 ROD.

SHANK POINT CONVERSION KIT ROCK POINT (900606)

Parts List

<u>Item No.</u>	<u>Part No.</u>	<u>Qty</u>	<u>Description</u>
1.	900308	2	Shank Point Plate
2.	900576	1	Cover Plate
3.	116023	1	V-Bottom Rock Point
4.	900606	1	Conversion Kit Instructions

Hardware List

<u>Item No.</u>	<u>Part No.</u>	<u>Qty</u>	<u>Description</u>
A.		1	$\frac{3}{8}$ " \times $2\frac{1}{4}$ " NC Hex Bolt, Grade 5–Top Hole
B.		1	$\frac{3}{8}$ " NC Whiz Nut–Top Hole
C.		1	$\frac{1}{2}$ " \times 2" Roll Pin–Bottom Hole

NOTE: This rock point conversion kit contains the conversion parts for only one shank. Be sure when ordering to specify the number of shanks being converted.