

# Corrugate Opener

## **Wiring Diagram**

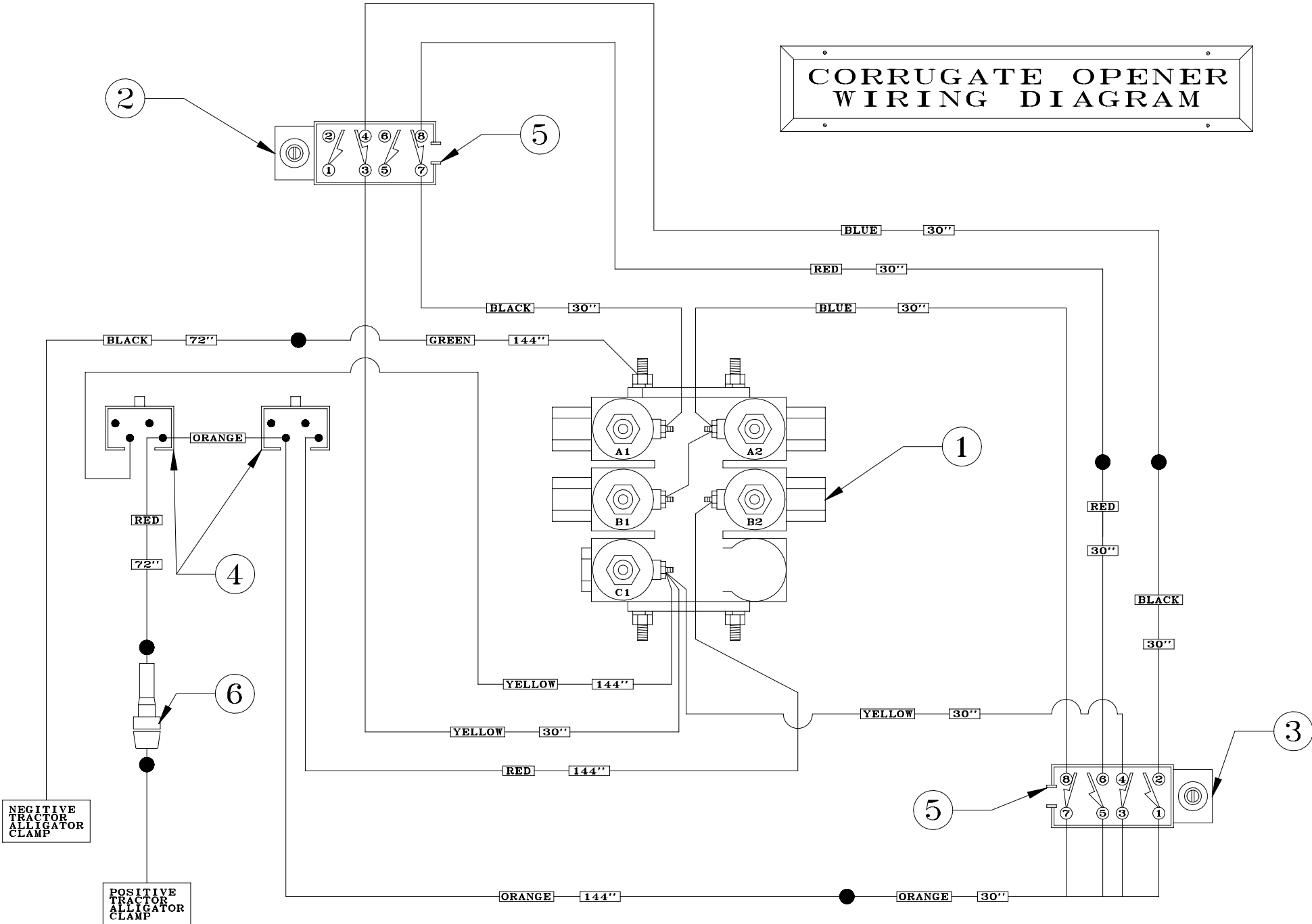
## **Section 2**

---

Model Years (1988 – 1994).....	2-3
Model Years (1995 – 1997).....	4-5
Model Years (1998 – Present) .....	6-7

Return to this page by clicking the upper right corner of any page in this section.

# CORRUGATE OPENER WIRING DIAGRAM



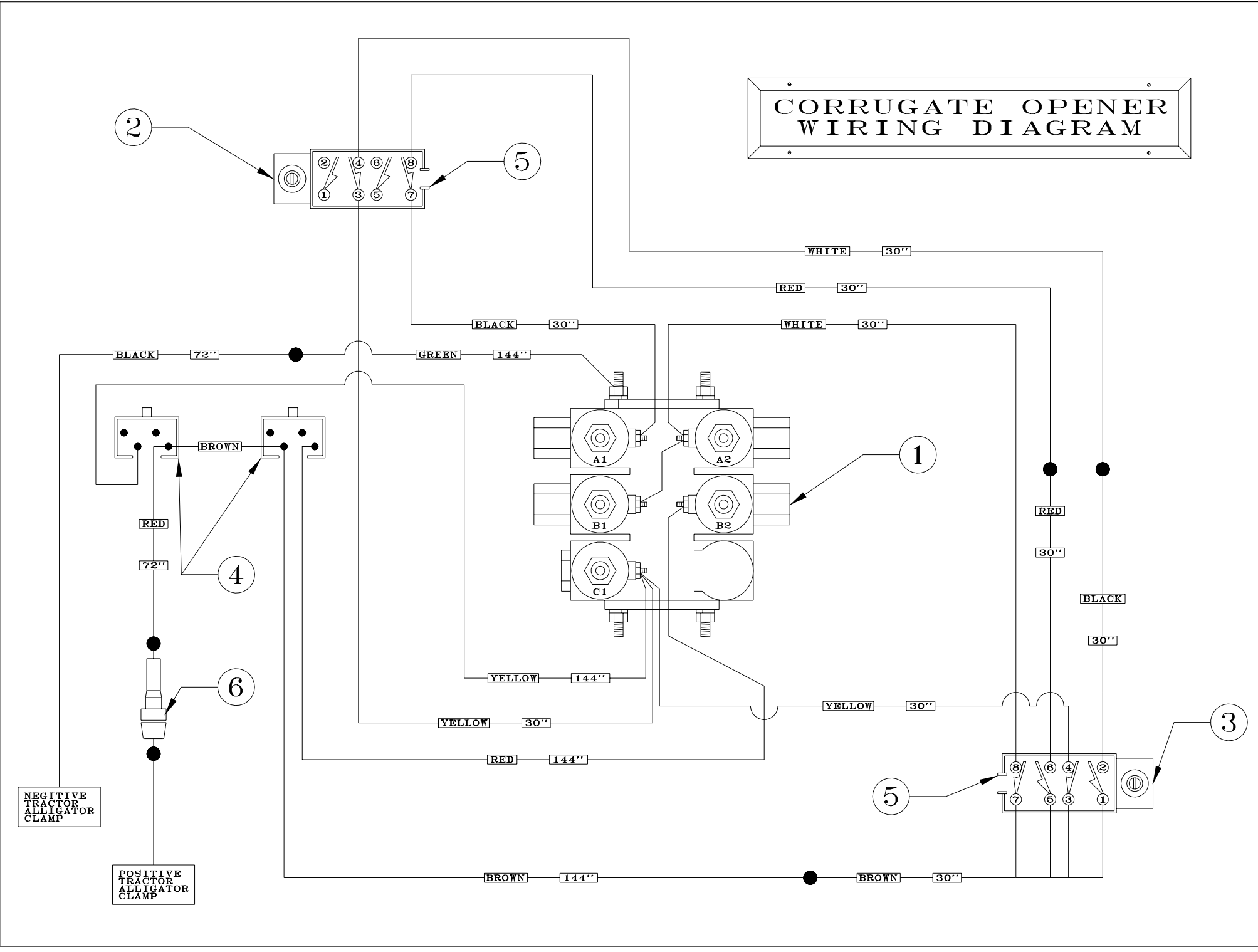
---

## Wiring Diagram (1988–1994)

### Parts List

<u>Item No.</u>	<u>Part No.</u>	<u>Description</u>
1.	122008	Solenoid Valve (12V DC) (mounted to main frame)
2.	119055	Limit Switch (802TATP) (mounted on the 8" retract ram)
Not Shown	112000	Lever, Roller Adjustable (802TW2C) (mounted on item no. 2)
3.	119029	Limit Switch (802TAMTP) (mounted on main frame)
Not Shown	112001	Lever, Fork Steel (802TW4C) (mounted on item no. 3)
4.	119057	Contact Switch (800TXA) (mounted in the tractor cab)
Not Shown	119058	Switch, Push Button Assembly (800TB1A) (mounted on item 4)
5.	108061	Holder, Wire 1/2" x 3/8" (CGB194) (used on items 2 & 3)
6.		Buss Fuse (HRK-20 amp) (buy this part locally)

# CORRUGATE OPENER WIRING DIAGRAM



2

5

1

4

6

3

5

NEGITIVE  
TRACTOR  
ALLIGATOR  
CLAMP

POSITIVE  
TRACTOR  
ALLIGATOR  
CLAMP

BLACK 72"

GREEN 144"

BLACK 30"

WHITE 30"

RED 30"

WHITE 30"

BROWN

RED

72"

YELLOW 144"

YELLOW 30"

RED 144"

YELLOW 30"

RED

30"

BLACK

30"

BROWN 30"

BROWN 144"

---

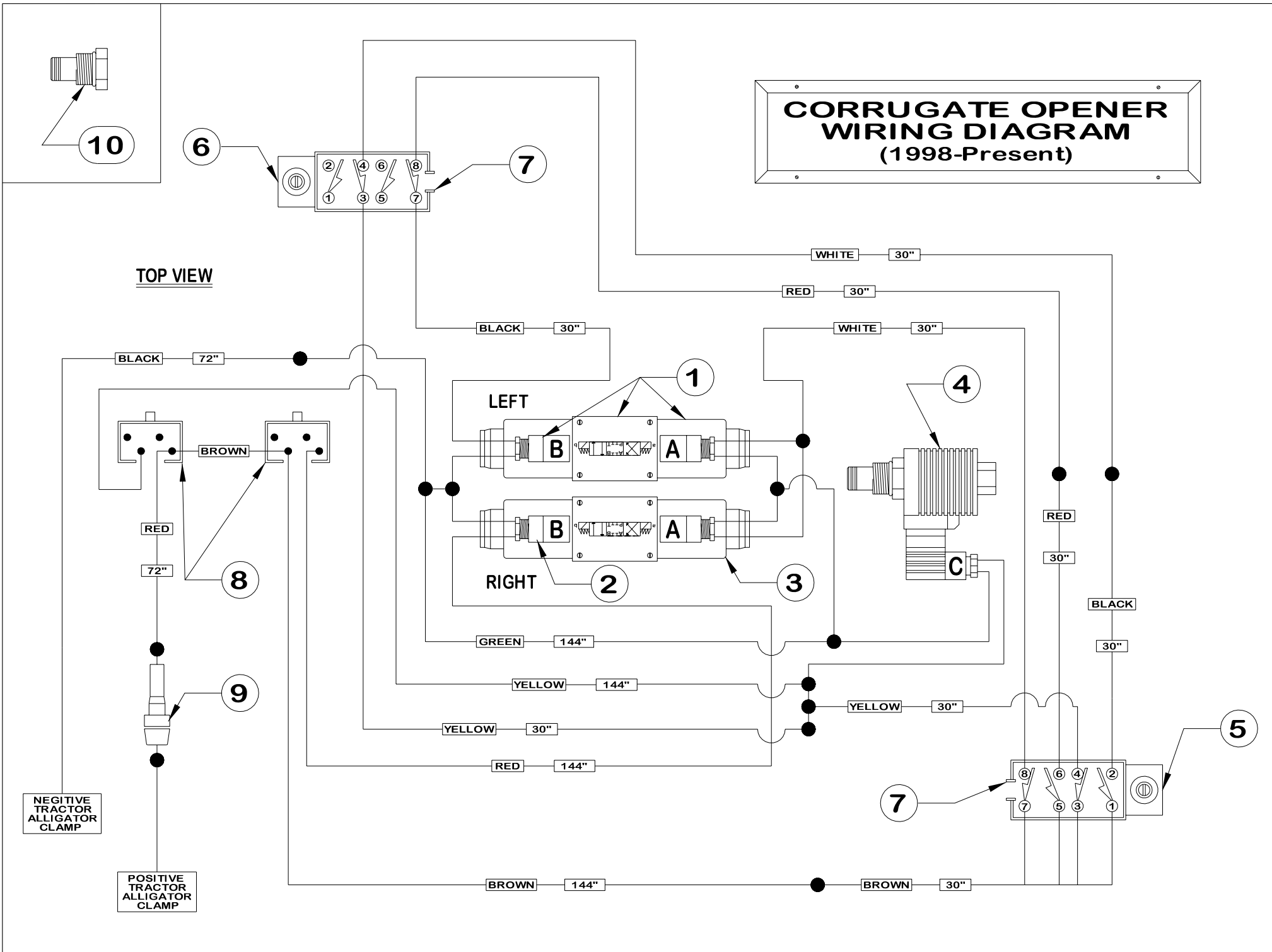
## Wiring Diagram, (1995–1997)

### Parts List

<u>Item No.</u>	<u>Part No.</u>	<u>Description</u>
1.	122008	Solenoid Valve (12V DC) (mounted to main frame)
2.	119055	Limit Switch (802TATP) (mounted on the 8" retract ram)
Not Shown	112000	Lever, Roller Adjustable (802TW2C) (mounted on item no. 2)
3.	119029	Limit Switch (802TAMTP) (mounted on main frame)
Not Shown	112001	Lever, Fork Steel (802TW4C) (mounted on item no. 3)
4.	119057	Contact Switch (800TXA) (mounted in the tractor cab)
Not Shown	119058	Switch, Push Button Assembly (800TB1A) (mounted on item 4)
5.	108061	Holder, Wire 1/2" x 3/8" (CGB194) (used on items 2 & 3)
6.		Buss Fuse (HRK-20 amp) (buy this part locally)

# CORRUGATE OPENER WIRING DIAGRAM (1998-Present)

TOP VIEW



## WIRING DIAGRAM (1998–Present)

### Parts List

<u>Item No.</u>	<u>Part No.</u>	<u>Description</u>
1.	122039	Valve, Directional (Includes: 116030 & 122042)
2.	116030	Plug, Solenoid Electrical
3.	122042	Valve, Body Solenoid
4.	122041	Valve, Solenoid (Used on open center tractors)
5.	119029	Limit Switch (802TAMTP) (mounted on main frame)
Not Shown	112001	Lever, Fork Steel (802TW4C) (mounted on Item 5)
6.	119055	Limit Switch (802TATP) (mounted on 8" retract ram)
Not Shown	112000	Lever, Roller Adjustable (802TW2C) (mounted on Item 6)
7.	108061	Holder, Wire ½" × ⅜" (CGB194) (used on Items 5 & 6)
8.	119057	Contact Switch (800TXA) (mounted in the tractor cab)
9.		Buss Fuse (HRK-20 Amp) (buy this part locally)
10.**	122043	Valve, Plug
Not Shown	122038	Valve, Corrugate Control (Includes (2) 122039, 122040, 122041)

\*\* When using the Corrugate Opener on a closed center tractor, replace item no. 4 (122041) with this valve plug no. 122043.